



WOLVERINE

ONE TOUGH MOTHER



Written by **Kira Ivanoff**
Directed by **Alexander Sletten**
Executive producers: **Martin Mészáros, Sabine Holzer**

1x50 min.
4K, 5.1 and Stereo

#terramatters

An immersive look into the life of one of the world's most fabled and iconic species. Set in the wild forests of 'No-man's-land.'

Glamorised by Hollywood and villainised by ancestral folklore, the wolverine is both a fabled icon of the Northern Hemisphere and a modern-day superhero.

Our heroine of this story, Freya, is a 3-year-old female wolverine – shy and elusive and rarely caught on camera, she inhabits a mysterious and unforgiving world – deep in the rugged wilderness between Russia and Finland. Freya thrives in 'No-man's land' – so named for good reason; it's a remote and remorseless habitat; no man could survive here.

In this unique and intimate blue-chip natural history documentary, we show how Freya is built for this landscape, armed with special adaptations that maximise her survival success; weatherproof fur, 'snowshoe' paws, specialised teeth and claws that carve through ice, agility, stamina and most importantly the grit and tenacity that is characteristic of wolverines – both young and mature.

As we journey through a year in her life, Freya's story unfolds in stunning 4K imagery. Set against the ever-changing backdrop of her visually captivating environment, her narrative is a chronological rollercoaster of events, often motivated by the visual feast of seasons. Each season brings with it a new set of challenges, opportunities and milestones which she must face head on – adapt to or die. Documenting her battles against the harshest

conditions and some of the fiercest predators, mostly much larger than her, Freya showcases her acute set of instincts, incredible skills, courage and perseverance. Her competitors for food and territory are wily wolves and massive bears – but she is wolverine and not daunted by her foes. She's carved out a niche in this hostile land all alone and she's determined to master her territory.

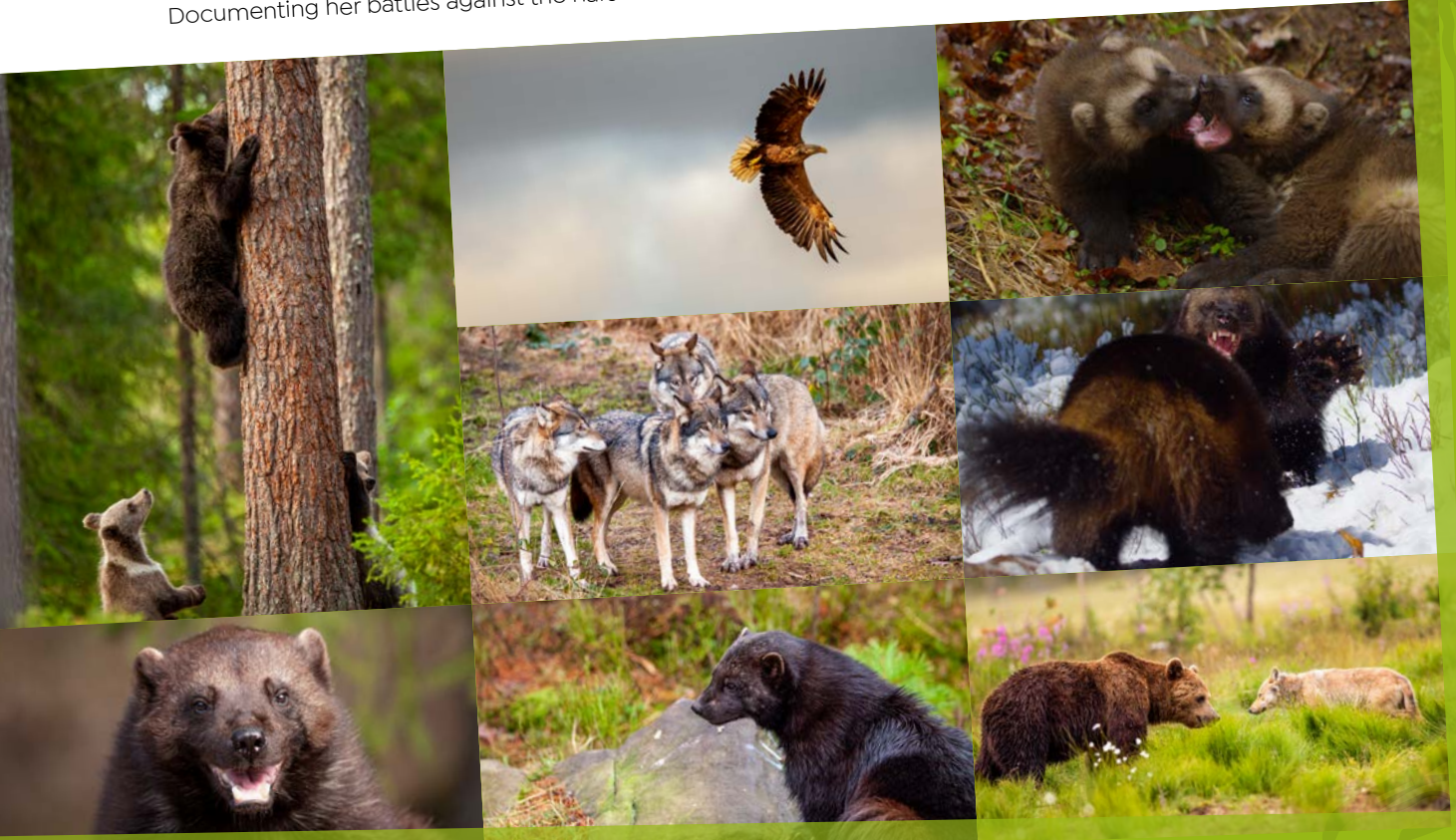
But a whole new challenge awaits her this year; she has just become sexually mature and as a first-time mother, how will she cope when her two young kits arrive?

This journey is hard-wired into her DNA, rearing her young to independence through the harshest winter conditions. If she fails, it's a bitter pill to swallow; climate change and habitat loss are threatening her very existence and every kit counts.

If she succeeds, it will stand testament to the true grit which makes up every ounce of her being. She's uniquely equipped to face all the challenges the harsh wilderness throws at her, but will her arsenal of superpowers be enough?

Probably – for she is Wolverine!

Produced by Red Rock Films International for Smithsonian Channel and Terra Mater Factual Studios in association with ZDF / ARTE, NHK and NRK



Terra Mater Factual Studios GmbH
Wambachergasse 2, 1130 Vienna / Austria
phone +43-1-87003-0, office@terramater.com
www.terramater.com